

BIM Pro Parameters			
Model	BIM Pro 1.6	BIM Pro 2.6	BIM Pro 4
Pixel Pitch (mm)	1.6	2.666	4
Physical Density (dot/m ²)	390625	140625	62500
LED Type	SMD1010	SMD2121	SMD2121
Module Size (mm*mm)	256*288	256*288	256*288
Module Resolution (px*px)	160*180	96*108	64*72
Viewing Angle (Deg)	140°(H)/150°(V)	140°(H)/150°(V)	140°(H)/150°(V)
Brightness (nits)	>800	≥1000	>800
Gray Scale (bit)	16	16	16
Refresh Rate (Hz)	3840	3840	3840
Max. Power Consumption(W/m ²)	640	640	640
Average Power Consumption(W/m ²)	256	256	256
Cabinet Size(mm*mm*mm)	1024*288*40 / 768*288*40 / 512*288*40		
Cabinet Weight (Kg/m ²)	7 / 6 / 5		
Input Voltage (AC)	100-240V	100-240V	100-240V
Ingress Protection	IP20	IP20	IP20
Working Environment	Indoor	Indoor	Indoor
Certificates	ETL / FCC / CE / EMC	ETL / FCC / CE / EMC	ETL / FCC / CE / EMC

*Above details only for reference, all rights reserved and belong to 

Application Reference



Shopping Mall



Ceiling



Window Advertising



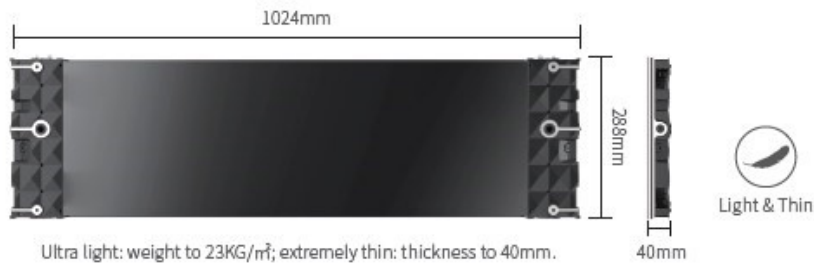
BIM Pro



— BIM Pro —

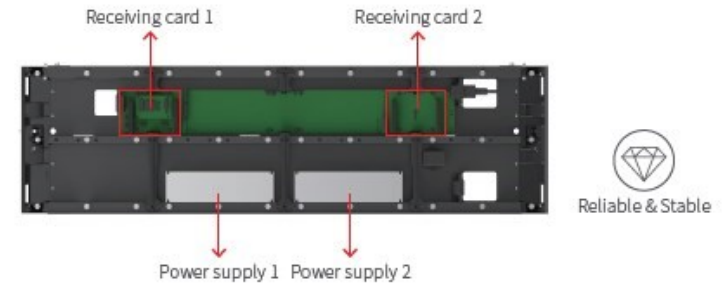
Indoor Fixed • Ultra Light & Thin

◆ New Generation of BIM Series-BIM Pro



Ultra light: weight to 23KG/m²; extremely thin: thickness to 40mm.

◆ Double-backup of Power Supply and Receiving Card



◆ 16:9 Golden Ratio, Easily Splicing 2K/4K/8K Screen, Better Visual Enjoyment



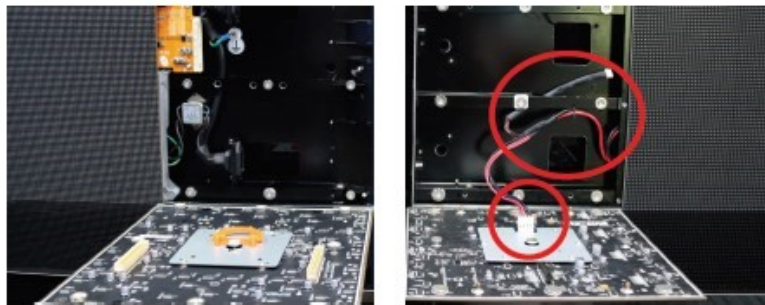
2K screen: 6*6 cabinets



◆ Total Front Maintenance, Various Installation Methods



◆ Wireless Connection Design: Simpler Inner Structure, Easy Maintenance



BIM Pro

The old design of BIM Series

◆ Various Sizes and Customized Cabinet Angle (0-45°) for Flexible Splicing

